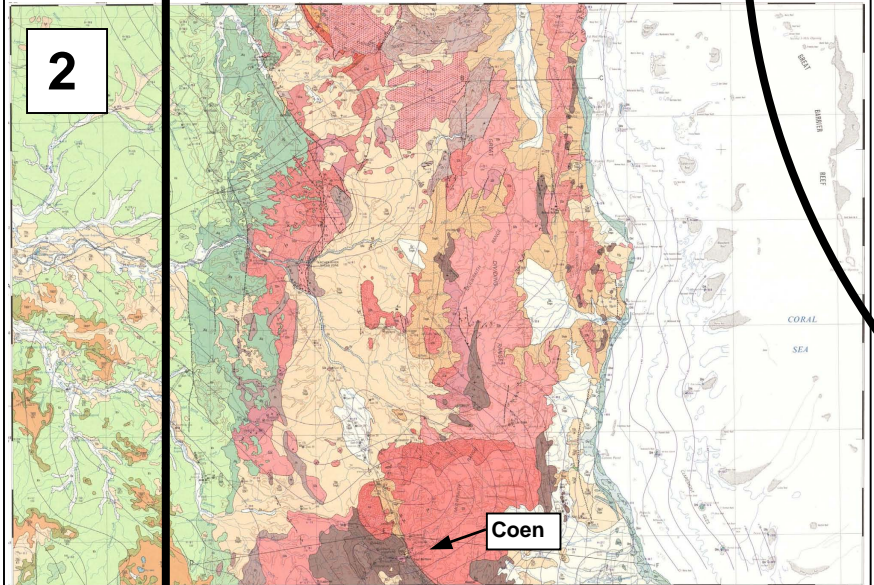


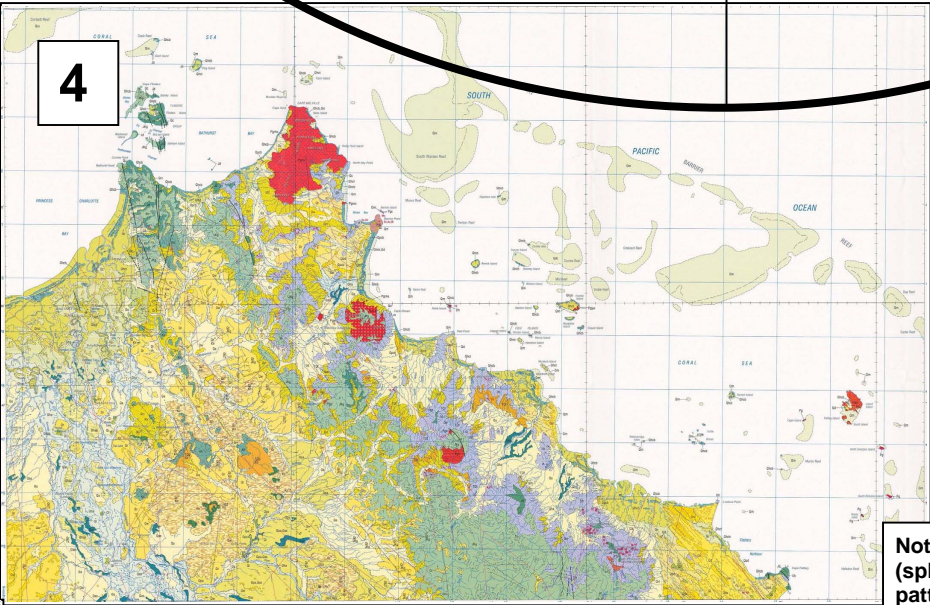
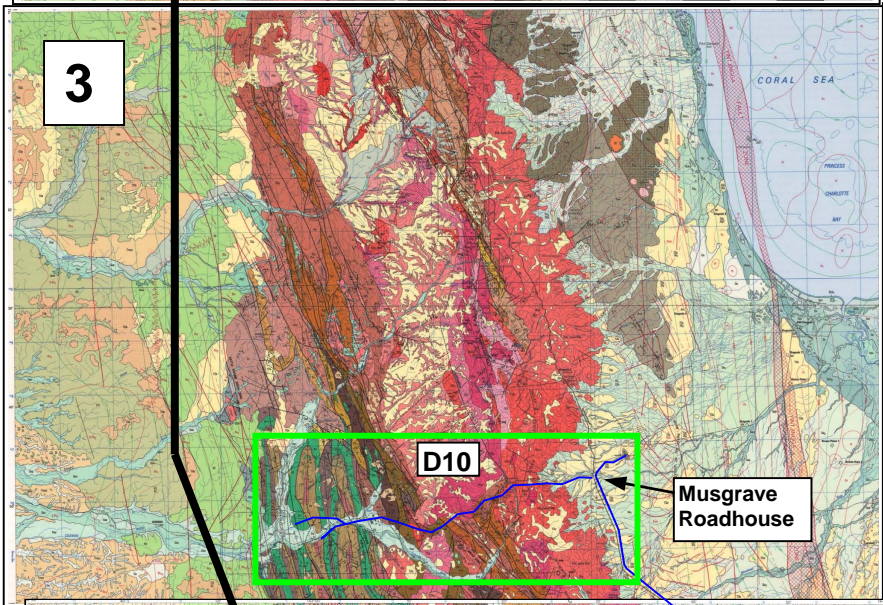
Geological Map (Cape York & Cooktown area) with locations where rock samples were collected

→ Combination of **9 geological maps** showing the Cape York Peninsula (north-east coast of Australia)



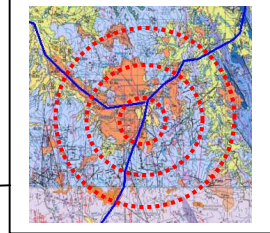
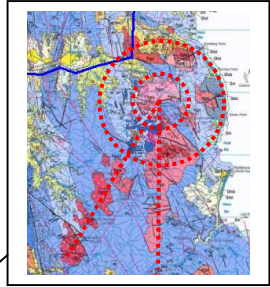
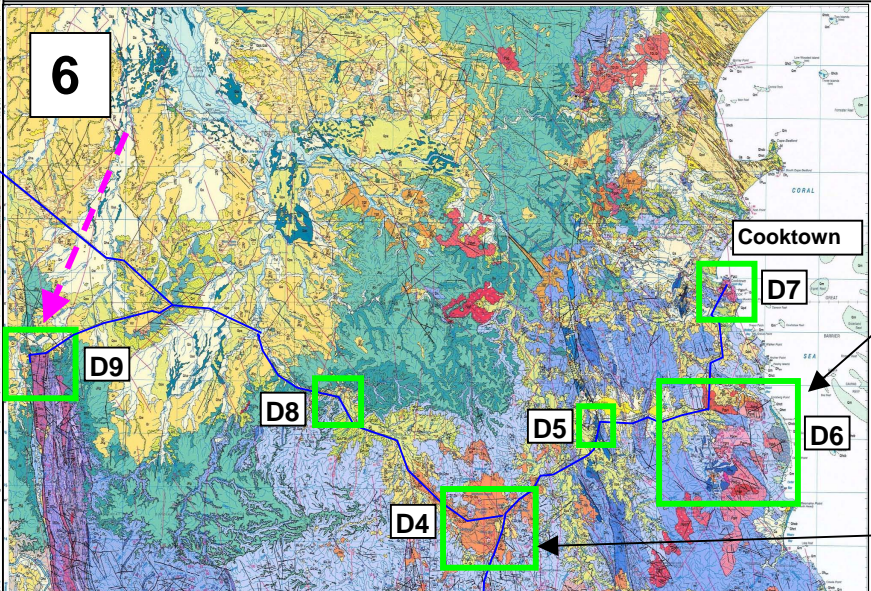
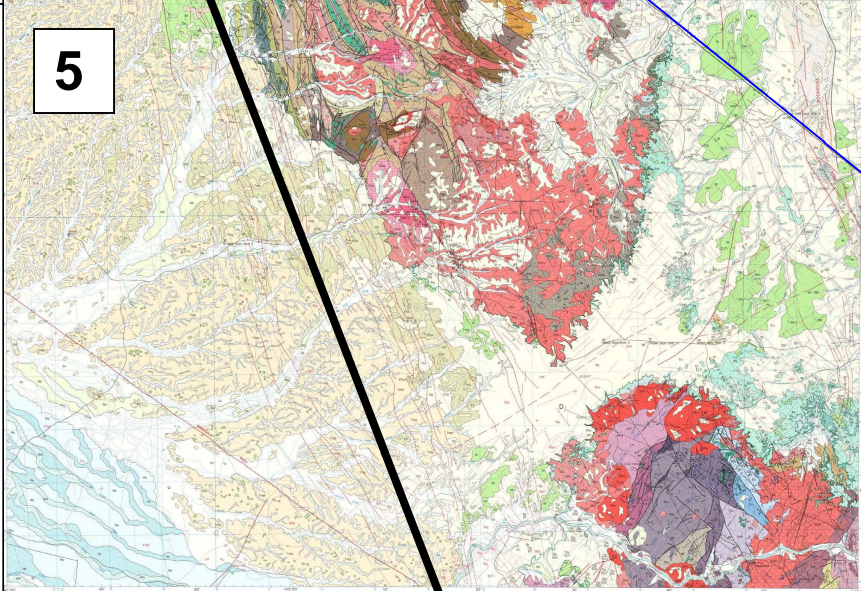
Center of assumed Primary Impact Crater

Base Diameter of assumed Impact Crater **approx 320 - 350 km** (Outer Rim Diameter approx 450 km)



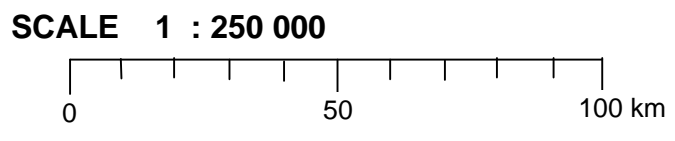
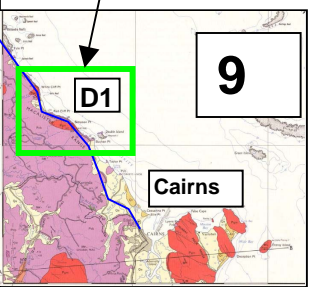
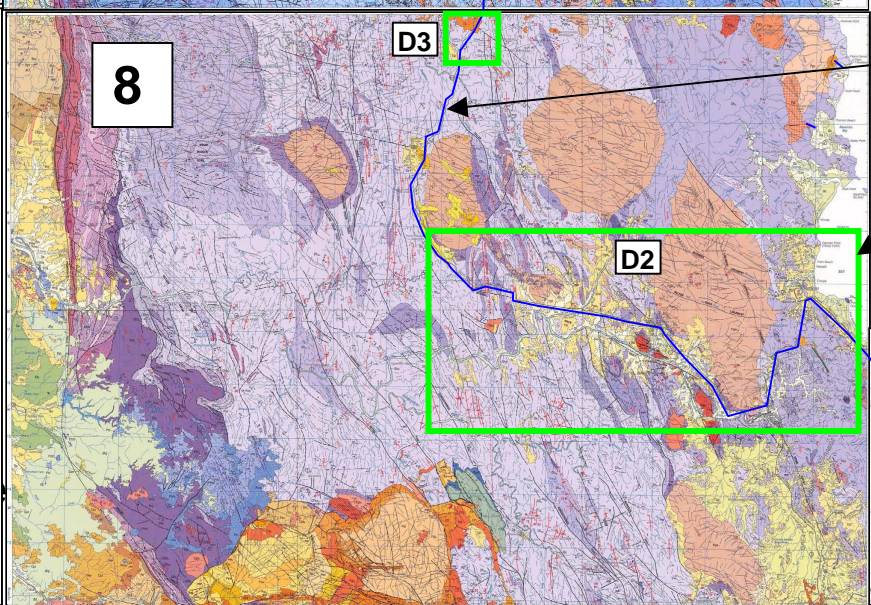
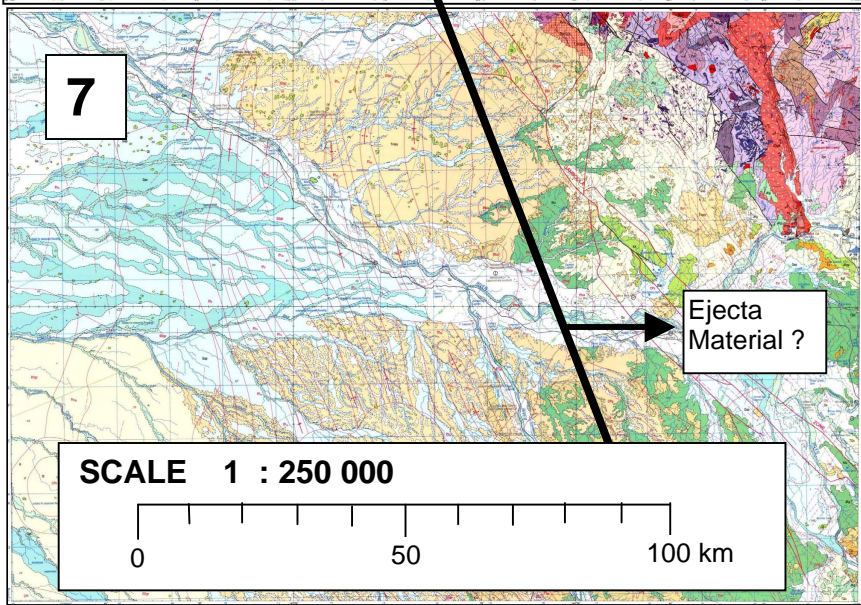
main impact direction

Note the impact-like (splash-like) distribution-pattern of different rock types in Details 4 & 6



Travel Route (Blue)

Map Details D1 - D10 with sites where samples were collected (areas marked in green) → next page



9

Cairns

