

Overview of area where samples where collected :

FRANCE – south-(west)

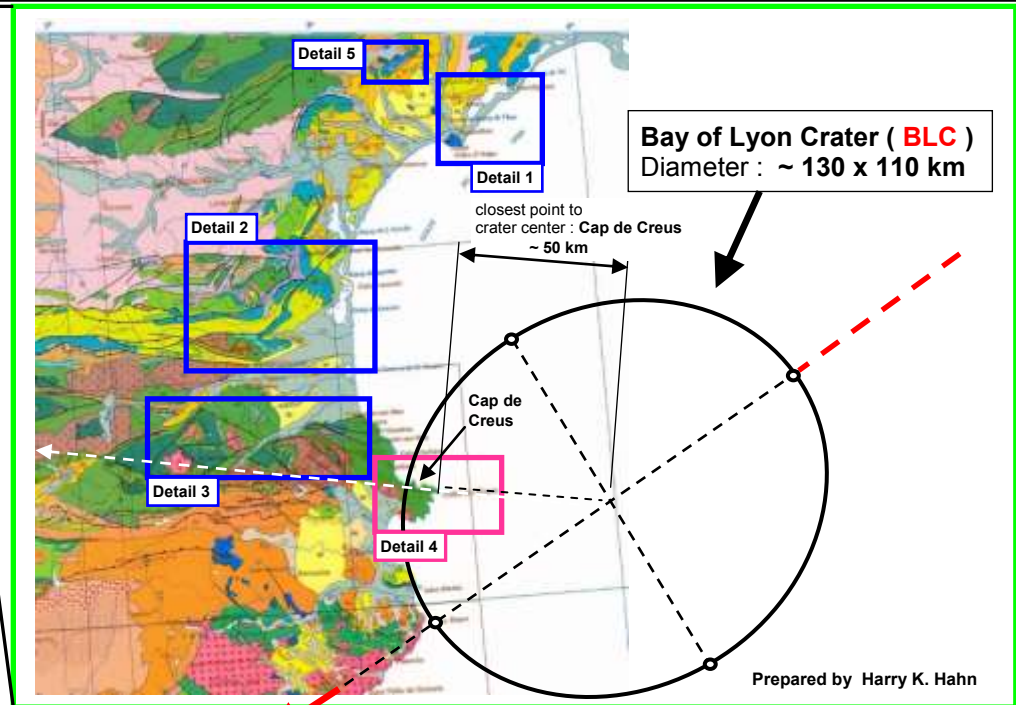
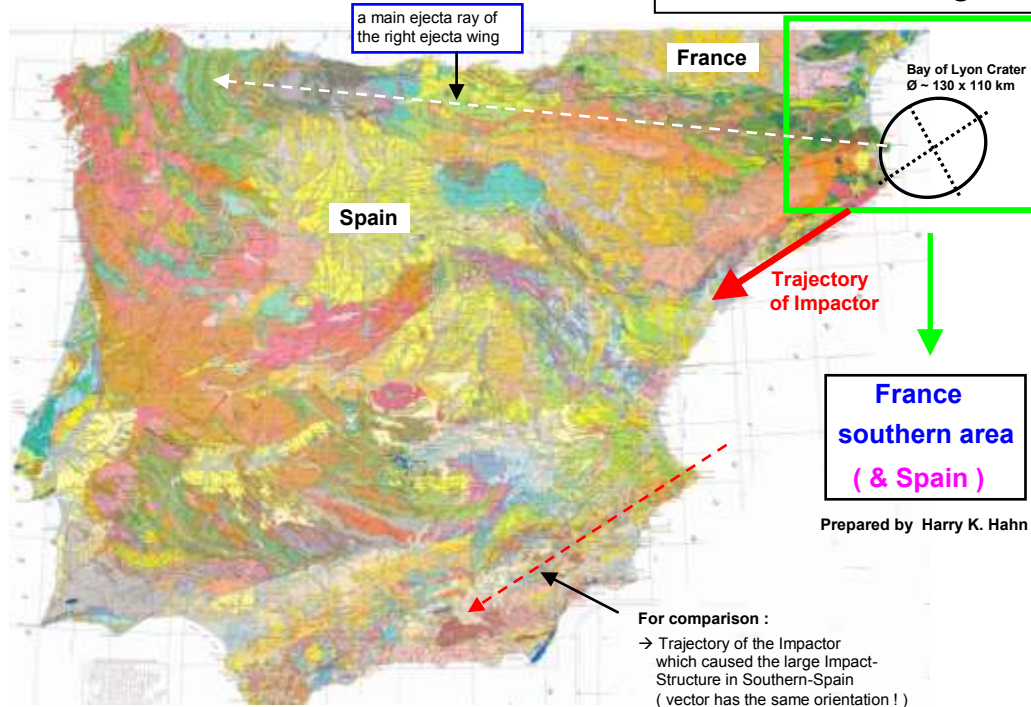
France - southern area (& Spain)

→ Geological Map of selected area

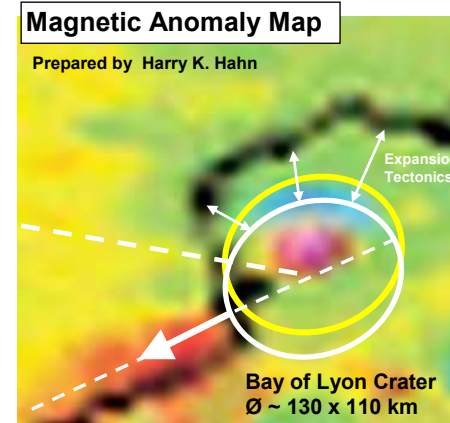
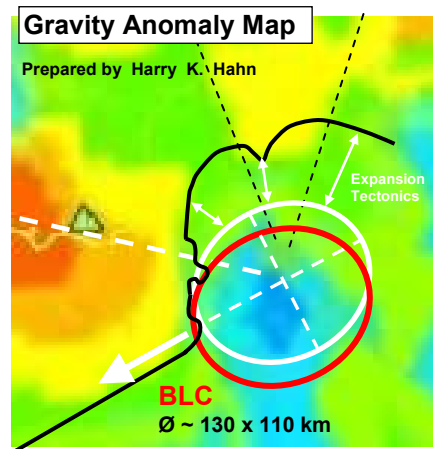
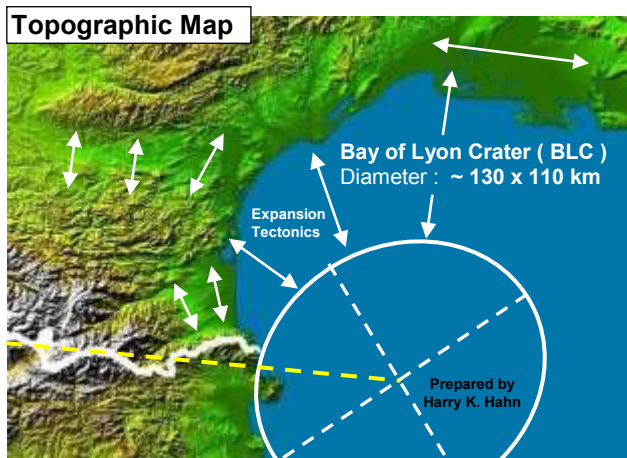
Geological Map of Spain & Southern France with marked area where Rock-samples were collected

Position of Bay of Lyon Crater shown on the map :

→ Weblink to Geological Map : <http://www.zonu.com/fullsize-en/2010-09-01-12020/Geological-map-of-Spain-1994.html>



→ different Maps of the selected area :

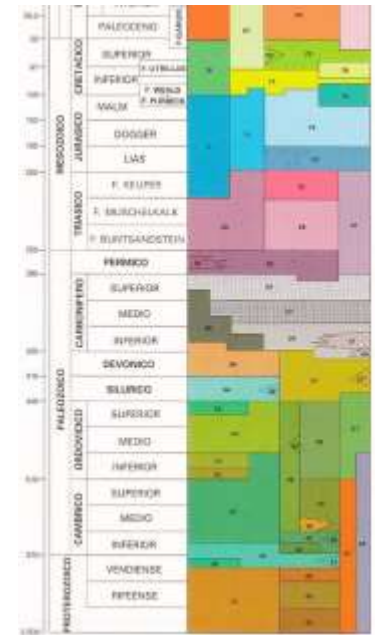


The Bay of Lyon Crater (BLC) belongs to a chain of Impact Craters which formed the south- & east coast of Spain and France on the Mediterranean Sea. In all probability it was caused by the Permian-Triassic (PT) Impact Event , 253 Ma ago. The elliptical crater which has a diameter of approx. ~ 130 x 110 km, was caused by an oblique impact. The expansion tectonics process which was triggered by the impact caused a stretching and shifting of the area around the crater. Especially the area north & east of the crater stretched and shifted considerably. If we use the crater position relative to continental area as reference (marked in white), then it is noticeable that the deep-lying gravity anomaly (blue) was deformed in a north-south direction by the northward shifting of the northern area. The magnetic anomaly caused by the impact slightly shifted north through the tectonic movement.

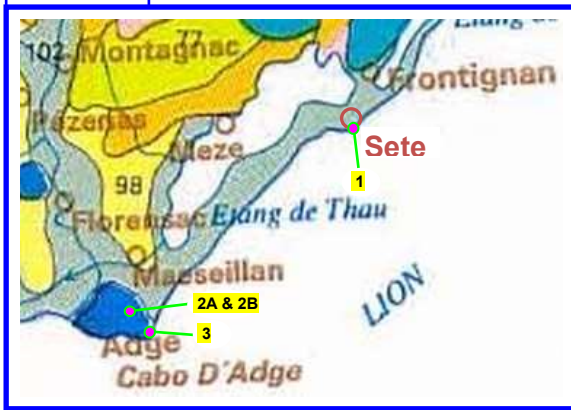
France - southern area

→ map details of selected areas

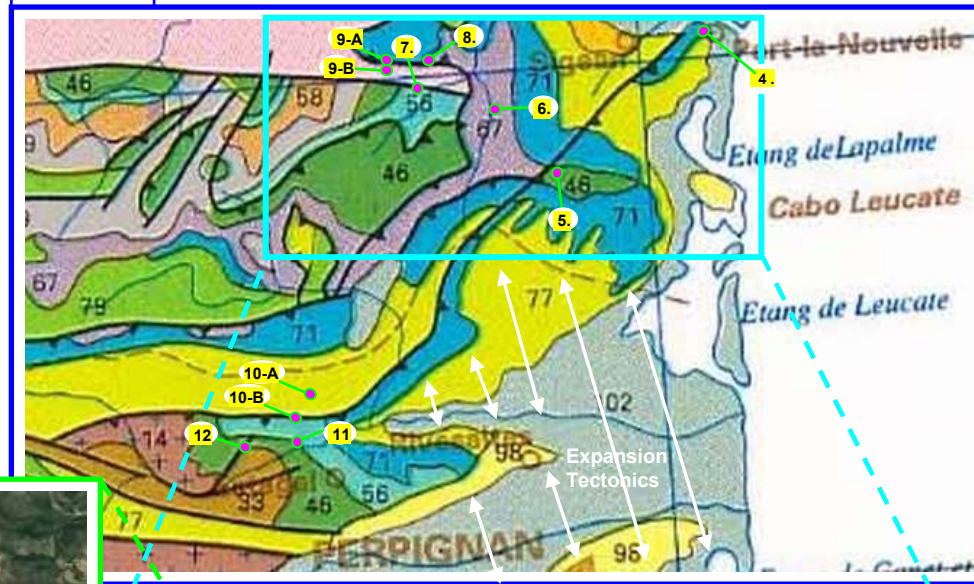
LEGEND (Rock Types)



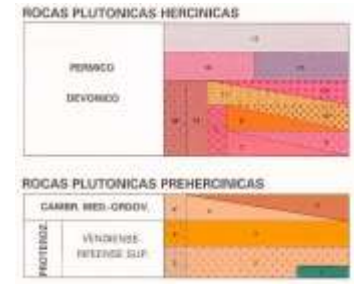
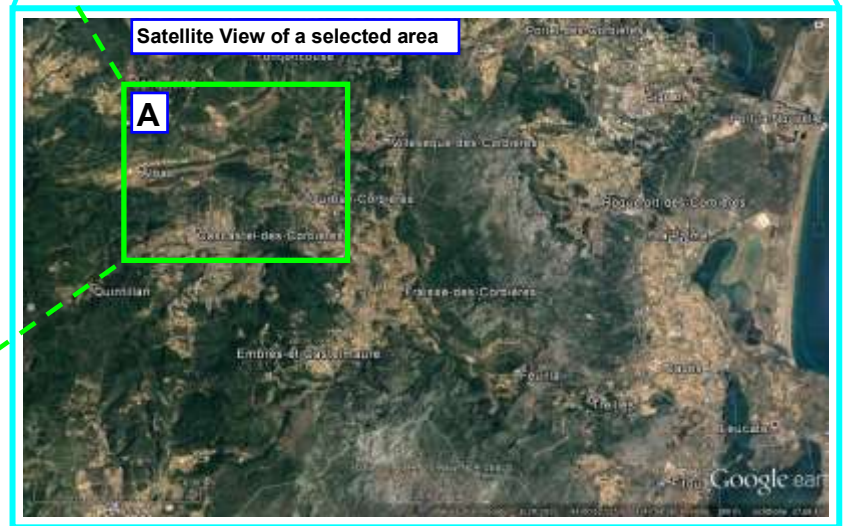
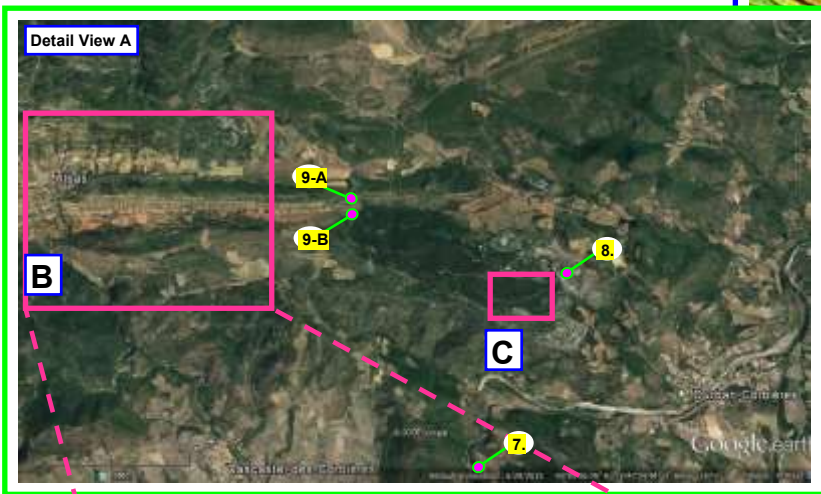
Detail 1 Rock Types : 102(?), 71(?), 97(?)



Detail 2 Rock Types : 33(?), 46, 56, 67, (71), (77), (81)



Sample sites No : 1 to 29 marked in yellow on the maps



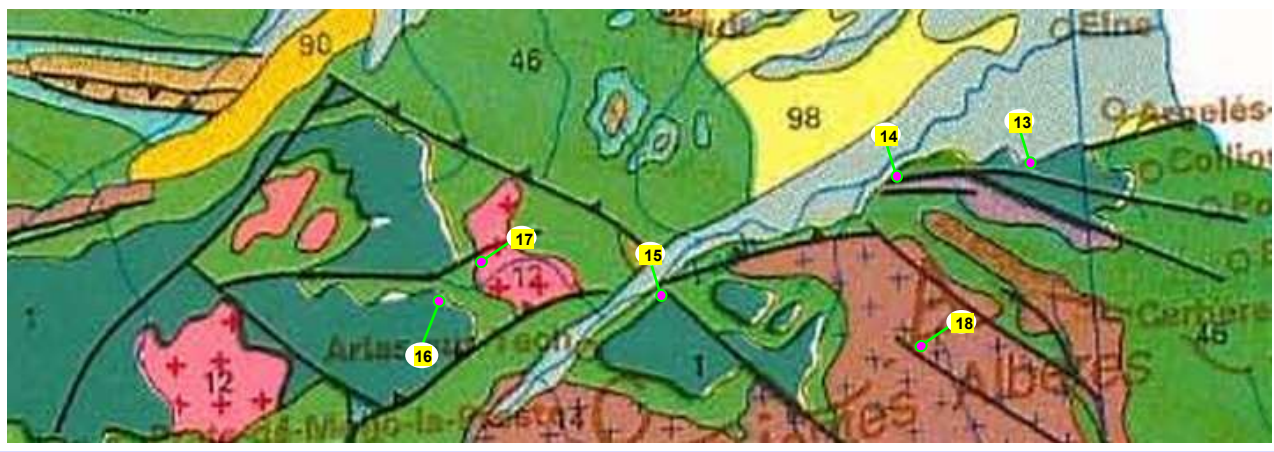
bow-shaped structure near sample site No.8 :

These details show linear- and bow-shaped structures which in all probability are caused shortly after the Bay of Lyon Impact Crater Event (BLC)

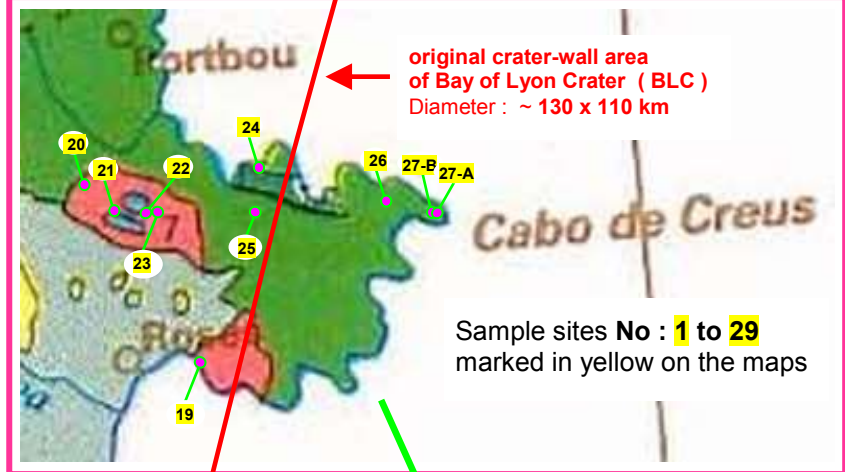
France - southern area (& Spain)

Detail 3 Rock Types : 1, 12, 14, (67), (46)

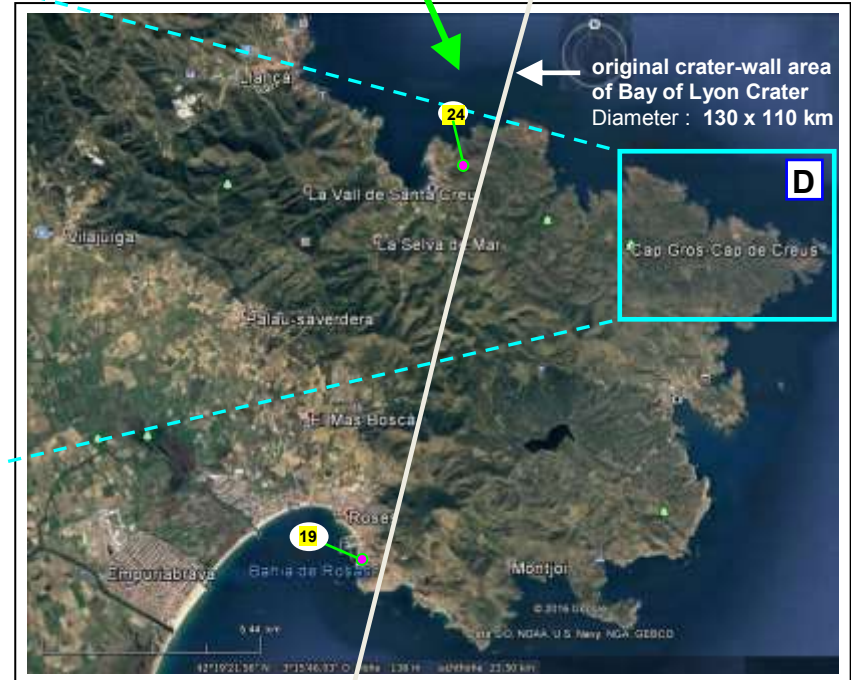
→ map details of selected areas



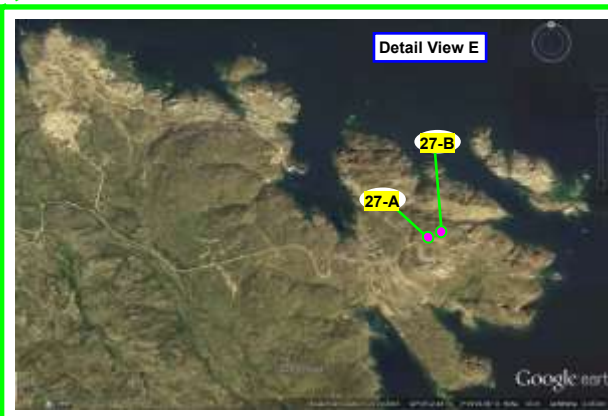
Detail 4 (Spain) Rock Types : (1), 7, 46, (71)



Detail 5 Rock Types : (58), 67, 71



Angle View of the eastern most point of Cap de Creus



The above shown **Cap de Creus** is the closest point to the center of impact of the **Bay of Lyon Crater (BLC)**. Distance to the crater center ~ 50 km

It seems that **Cap de Creus** is a remain of the original crater-wall of the Bay of Lyon Crater ! Therefore it should be a primary research area for the scientific analysis of this Impact Event.